

# CASE HISTORY

## VULCAN™ MFT 24 IDENTIFIES LEAK PATH AND CORROSION

### APPLICATION

Well Integrity

### TECHNOLOGY

Vulcan™ MFT 24  
(Multi-Finger Tool)

### LOCATION

Gulf of Thailand

### CUSTOMER CHALLENGE

The customer had reason to believe there was a leak on a producing well and suspected flow between the 7 in and 9 5/8 in casings. The challenge was to find the leak path(s), as well as determine the integrity of the rest of the 7 in casing that was left behind, with special interest around the proposed depth of a new packer that was to be set approximately 2,600 ft deeper than the original.

### SCIENTIFIC SOLUTION

Scientific Drilling's Vulcan™ MFT 24 tool was utilized because it met all the specifications required to accomplish the job as part of the workover program. Due to the high accuracy measurements the tool delivered, high resolution 3D imaging of the internal profile of the entire 7 in casing was possible. The caliper identified a leak path in the 7 in casing at a depth close to what had been anticipated. Unexpectedly, severe corrosion was also revealed in the four joints immediately below the hanger pup.

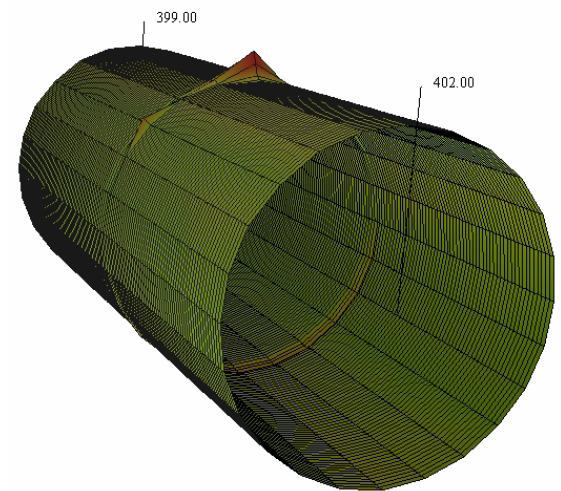
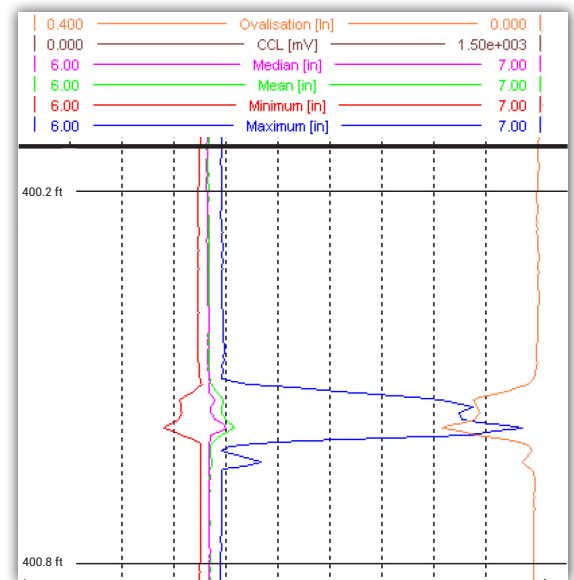
### CUSTOMER VALUE

The detailed internal profile of the casing allowed the customer to proceed with the workover program as planned. In addition, operations were streamlined, with the assurance they no longer needed to pull additional pipe, delivering significant cost savings. Experienced SDI personnel familiar with the company's field operations helped achieve a cost effective solution, along with the log analyst who was on standby for a quick turnaround of data. The log analysis delivered will also allow the customer to undertake future investigations using the data provided to proactively identify damaged areas.

### CUSTOMER TESTIMONIAL

"From downloading of memory data on the rig at 22:00 hours to receiving a report, which is cross checked and processed here in town by 04:00 hours, is very good going at the best of times. All of this was completed on a holiday weekend, showing an extra effort that we don't see much of these days. We sincerely appreciate the effort by SDI and your team offshore! Very well done to your team!"

– Well Services Superintendent



### 3D Visualization & Log

Showcasing hole identified by caliper at 400.6 ft

Updated July 2015

Copyright © 2015 Scientific Drilling International