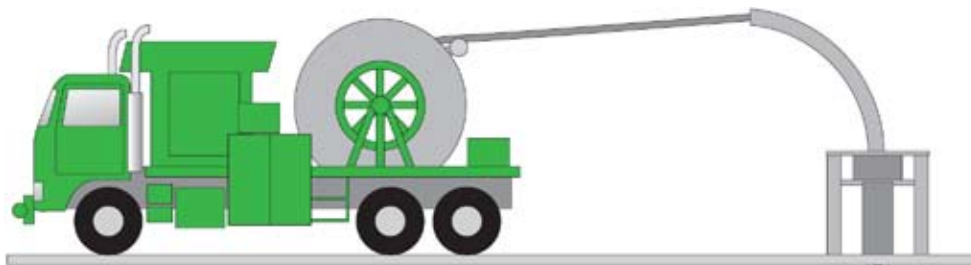




Horizontal-Lateral Identification Tool (Hi/Lite)

Scientific Drilling has combined our directional surveying and production logging tools to provide the first service of its kind to easily identify which lateral well has been entered with the coiled tubing during remedial well operations in multi-lateral wells with 'barefoot' type completion schemes.

In multi-lateral wells with 'barefoot' completions, the traditional depth correlation tool of Gamma Ray/Casing Collar Locator (GR/CCL) is often insufficient to determine which lateral well the coiled tubing has entered. The additional data from our tool combination includes directional survey sensors that are correlated back to the

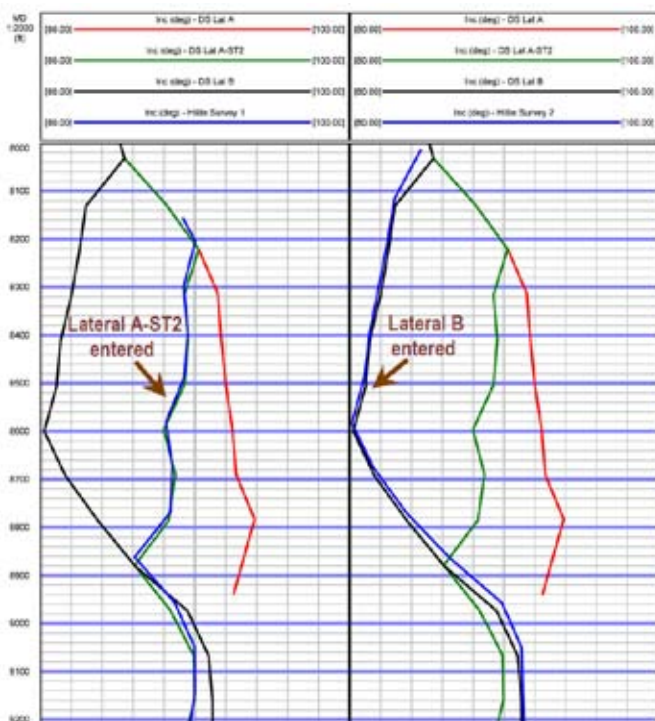


directional surveys that were taken while the wells were being drilled. This enables positive identification of which lateral the coiled tubing has entered.

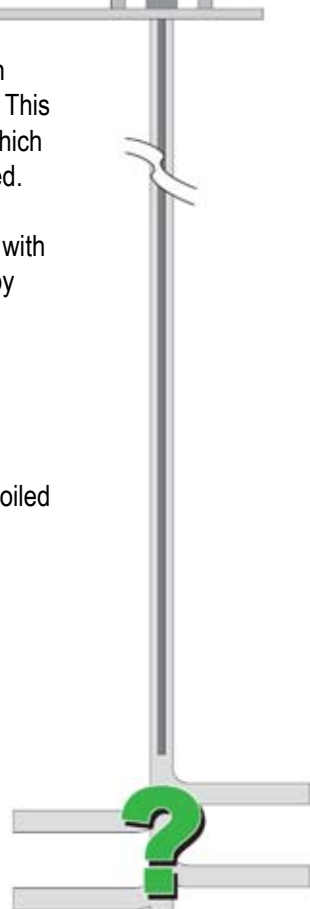
The tool can be run in conjunction with lateral entry guide tools provided by coiled tubing service companies.

Benefits

- Reduces cost through improved wellsite efficiency
- No uncertainty of which lateral coiled tubing is in
- Time and money is spent in the correct lateral



This example shows the Hi/Lite tool entered different laterals on two passes on the same well. The 1st pass (left) shows the Hi/Lite survey closely correlates to the base survey for Lateral A-ST2 and the 2nd pass (right) correlates to the base survey on Lateral B. This confirms the correct lateral has been entered before beginning remedial operations to the lateral.



TECHNICAL SPECIFICATIONS	
Length	19 ft 1 in (5.82 m)
Outside Diameter	2.75 in (6.99 cm)
Pressure Rating	10,000 psi (68,949 kPa)
Temperature Rating	302°F (150°C)
Equivalent Flow Area	1.92 in ² (12.77 cm ²)

Specifications are subject to change without notice.



Scientific Production Services
A Division of Scientific Drilling International

Cost-Effective, Accurate Data