

CASE HISTORY

MagTraC COMPLETES COMPLEX FISH BYPASS & RECOVERS LOST PRODUCTION

APPLICATION

Fish Bypass and Production Recovery

TECHNOLOGY

MagTraC MWD Ranging™

LOCATION

Romania

CUSTOMER CHALLENGE

The customer was faced with a rapidly escalating situation - a fish in the 12 ¼" hole around the 1,000 m section. In addition, there was the potential of gas releasing to the surface, causing significant environmental and cost concerns. After repeated failed attempts to kill the well at the surface, the customer decided the best option was to drill a relief well and then to intercept the open hole below the fish in order to recover the lost production.

SCIENTIFIC SOLUTION

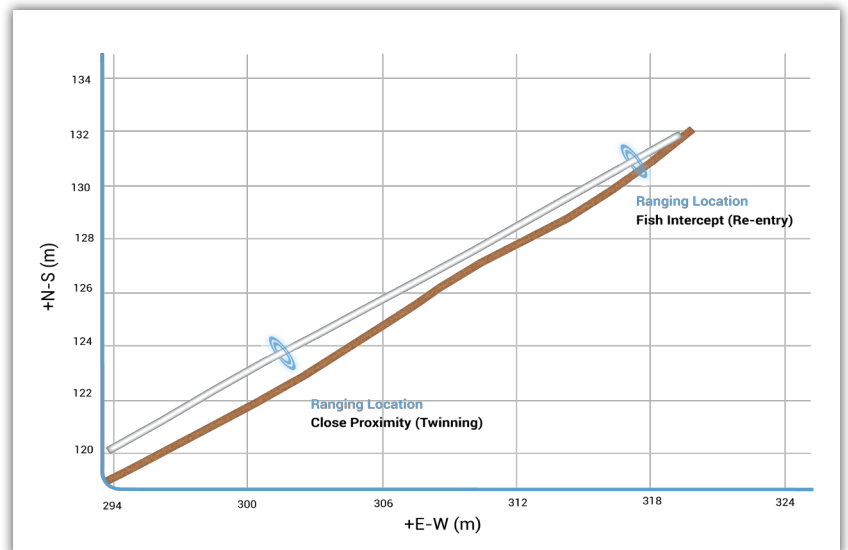
Scientific Drilling's MagTraC MWD Ranging™ solution was selected to facilitate the ranging to determine the location of the fish. The ranging began in the 12 ¼" hole section from 923 m to 1,018 m, confirming the fish was 5 m away. The ranging then resumed in the 8 ½" section from 1,091 m to 1,435 m. SDI continued to monitor the wellbore separation from the fish and confirmed the 5 m separation at TD was maintained throughout the section. Finally, ranging shots were taken in the 6" hole section for the final approach and was able to confirm the intercept of the motor and open hole at 1,543 m.

CUSTOMER VALUE

SDI was able to quickly mobilize and provide around-the-clock ranging support to efficiently locate the fish, to intercept the open hole, and maintain close separation until TD. These streamlined processes saved the customer a significant amount of time and money by re-entering the open hole to recover lost production. SDI also ensured safe operations were performed with minimal impact to the environment.

TESTIMONIAL

"The ranging efforts were the key to the success. I really valued the 24 hour support. Overall, good teamwork made the entire thing happen." - Head of Well Engineering



The plot above showcases the ranging shots taken to ensure a successful wellbore intercept and production recovery.